



BS1452 Grade 200 Cast Iron

Available in flats and rounds.

BS1452 Grade 200 Cast Iron suppliers, delivering to the whole of the UK.

Cast iron grade BS1452 Grade 200 is continuous cast and supplied in rounds and flats. It offers excellent machineability characteristics to achieve a good polished surface finish. As a continuous cast iron bar grade it has a fine grain structure, combined with the fine graphite flake size and dense homogeneous structure.

Cast iron grades we supply

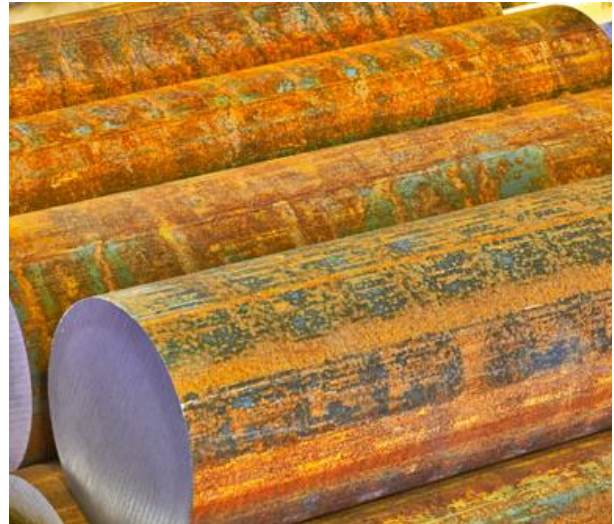
[200](#) | [220](#) | [250](#) | [260](#) | [300](#) | [350](#)
[400-15](#) | [420-12](#) | [500-7](#) | [600-3](#) | [700-2](#)

Form of Supply

West Yorkshire Steel supply Grade 200 cast iron as round and flat bar. We can supply full bars or can offer cut pieces sawn to your required sizes.

Applications

BS1452 Grade 200 has limited strength and wear resistance than other cast iron grades. It has good noise and vibration damping combined with excellent machineability it is suited for standard cast iron applications such as moulds, dies and bearings.



Contact our experienced sales team who will assist you with your enquiry.

- Diameter
- Flat

Typical Analysis

Carbon	2.95-3.45%	Silicon	2.10-2.90%
Manganese	0.55-0.75%	Sulphur	0.04-0.07%
Phosphorous	0.10-0.20%	Iron	balance

Typical Properties

Typical Tensile
(subject to section)
N/mm²
115-155

Typical Hardness
(subject to section)
HB
120-200

Mechanical properties shown are typical and may vary subject to the size and section of this cast iron grade.

Certification

Cast Iron Grade BS1452 200 is available with a certificate of conformity, please request when placing any orders.

Quality Assured Supply

BS1452 Grade 200 cast iron is supplied in accordance with our ISO 9001:2015 registration.