



## 500-7 Spheroidal Graphite Iron

Available in flats and rounds.

### 500-7 S G Iron suppliers, delivered to the whole of the UK.

West Yorkshire Steel are suppliers of 500-7 SG iron continuous cast bar available in diameters and a limited range of flat sections. Sometimes referenced as a ductile iron BS2789 Grade 500-7 is a spheroidal graphite iron that offers better strength, wear resistance and hardening capabilities to that of [400-15](#) or [420-12](#) S G iron grades.

#### Related Specifications

BS EN 1563 EN16482 EN GJS 500-7 GGG50  
SFP500 SP500 70-50-05

#### Other cast iron grades we supply

**EN GJL grades** [200](#) | [250](#) | [300](#) | [350](#)

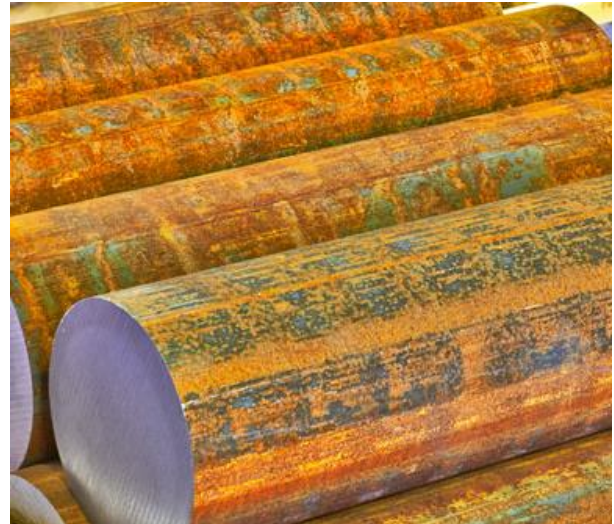
**EN GJS grades** [400-15](#) | [500-7](#) | [600-3](#)

#### Form of Supply

West Yorkshire Steel are a supplier and stockholder of SG Iron grade BS2789 500-7 in round bar. This S G Iron grade is available in 3 metre bar lengths or sawn to length to your requirements.

#### Applications

BS2789 Grade 500-7 is suited for applications such as gears, pistons, valve bodies, dies and moulds and for applications that require good noise and vibration damping.



Contact our experienced sales team who will assist you with your enquiry.

- Diameter
- Flat

### Typical Analysis

Carbon	3.40-3.85%	Silicon	2.30-3.10%
Manganese	0.10-0.30%	Sulphur	0.02% max
Phosphorous	0.10% max	Magnesium	0.07% max
Iron	balance		

### Typical Properties

Typical Tensile Strength N/mm <sup>2</sup>	Typical Elongation %	Typical Hardness HB
500	7	170-235

Mechanical properties shown are typical and may vary subject to the size and section of this grade.

### Certification

500-7 SG iron is available with a certificate of conformity, please request when placing any orders.

### Quality Assured Supply

500-7 SG iron is supplied in accordance with our ISO 9001:2015 registration.



**West Yorkshire Steel Ltd**  
Sandbeck Industrial Estate,  
Wetherby, Leeds,  
LS22 7DN UK

Call: 01937 584440  
Fax: 01937 580128  
Email: [sales@westyorkssteel.com](mailto:sales@westyorkssteel.com)



QUOTE ME



Information provided on our datasheets has been drawn from various recognised sources, including British, European and International Standards, recognised industry references (printed & online) and manufacturers' data. No guarantee is given that the information is from the latest issue of those sources or about the accuracy of those sources. Material supplied by the Company may vary significantly from this data but will conform to all relevant and applicable standards. Any of the products detailed may be used for a large range of purposes and as WYS has no control over their use; WYS specifically excludes all conditions or warranties expressed or implied by statute or otherwise as to dimensions, properties and/or fitness for any particular purpose, whether expressed or implied. © West Yorkshire Steel Ltd. All Rights Reserved.