

## BS1452 Grade 250 Cast Iron

Available in flats and rounds.

### BS1452 Grade 250 Cast Iron suppliers, delivering to the whole of the UK.

Cast iron specification BS1452 Grade 250 is supplied as continuous cast grey iron bar in rounds and flats. With its fine grain structure this grade can be machined to achieve a good polished surface finish suitable for copper or chromium plating. As a continuous cast iron bar it has a fine grain structure combined with the fine graphite flake size and dense homogeneous structure. BS1452 Grade 250 supersedes specification BS1452 Grade 17.

### Cast iron grades we supply

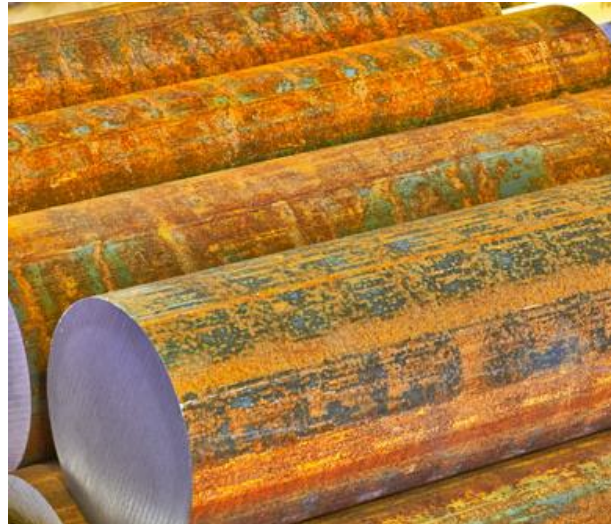
[200](#) | [220](#) | [250](#) | [260](#) | [300](#) | [350](#)  
[400-15](#) | [420-12](#) | [500-7](#) | [600-3](#) | [700-2](#)

### Form of Supply

West Yorkshire Steel supply Grade 250 cast iron as round and flat bar. We can supply full bars or can offer cut pieces sawn to your required sizes.

### Applications

BS1452 Grade 250 is suited for applications where the cast iron requires good wearing characteristics and when components require a combination of strength and wear resistance superior to those of other softer cast iron grades. Used widely in the plastics and glass industries applications include pistons, moulds, dies, bearings, cams, bushes and gears.



Contact our experienced sales team who will assist you with your enquiry.

- Diameter
- Flat

### Typical Analysis

Carbon	2.90-3.65%	Silicon	1.80-2.90%
Manganese	0.40-0.70%	Sulphur	0.10% max
Phosphorous	0.30% max	Iron	balance

### Typical Properties

**Typical Tensile  
(subject to section)**  
**N/mm<sup>2</sup>**  
155-195

**Typical Hardness  
(subject to section)**  
**HB**  
145-240

Mechanical properties shown are typical and may vary subject to the size and section of this cast iron grade.

### Certification

Cast Iron Grade BS1452 250 is available with a certificate of conformity, please request when placing any orders.

### Quality Assured Supply

BS1452 Grade 250 cast iron is supplied in accordance with our ISO 9001:2015 registration.