



## EN1561 GJL 200 Cast Iron

Available in flats and rounds.

### EN GJL 200 Cast Iron suppliers, delivered to the whole of the UK.

EN1561 EN GJL Grade 200 is a continuous cast produced iron and supplied in rounds and flats. Having a fine grain structure it offers excellent machineability with characteristics to achieve a good polished surface finish. This continuous cast iron bar grade has a fine grain structure, combined with the fine graphite flake size and a dense homogeneous structure.

### Cast iron grades we supply

EN GJL grades [200](#) | [250](#) | [300](#) | [350](#)

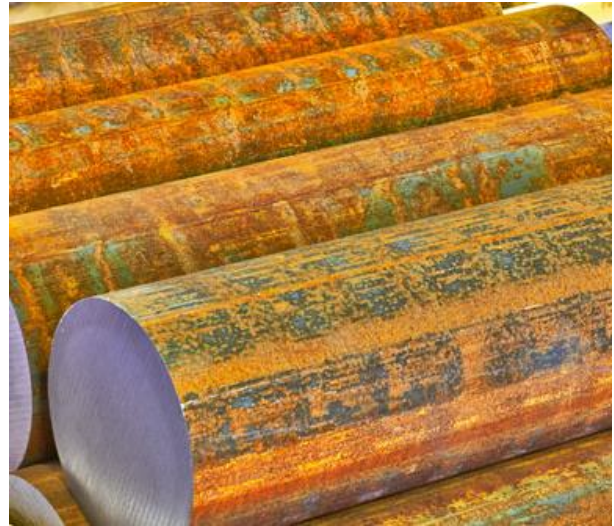
EN GJS grades [400-15](#) | [500-7](#) | [600-3](#)

### Form of Supply

West Yorkshire Steel supply EN GJL 200 cast iron grade as round and flat bar. We can supply full bars or can offer cut pieces sawn to your required sizes.

### Applications

EN GJL 200 has limited strength and wear resistance than other cast iron grades. With its good noise and vibration damping combined with excellent machineability it is suited for standard cast iron applications such as dies, moulds and bearings.



Contact our experienced sales team who will assist you with your enquiry.

- Diameter
- Flat

### Typical Analysis

Carbon	2.95-3.45%	Silicon	2.10-2.90%
Manganese	0.55-0.75%	Sulphur	0.04-0.07%
Phosphorous	0.10-0.20%	Iron	balance

### Typical Properties

**Typical Tensile  
(subject to section)**  
**N/mm<sup>2</sup>**  
115-155

**Typical Hardness  
(subject to section)**  
**HB**  
120-200

Mechanical properties shown are typical and may vary subject to the size and section of this cast iron grade.

### Certification

Cast Iron Grade EN GJL 200 is available with a certificate of conformity, please request when placing any orders.

### Quality Assured Supply

EN1561 EN GJL 200 cast iron is supplied in accordance with our ISO 9001:2015 registration.