



EN1561 GJL 350 Cast Iron

Available in flats and rounds.

EN GJL 350 Cast Iron suppliers, delivered to the whole of the UK.

Cast iron specification EN GJL 350 is a continuous cast grey iron supplied in rounds and flats. This high quality heat treatable cast iron grade offers excellent strength and wear resistance in comparison to other lower strength cast iron grades. It is machineable in the supply condition and will machine to a good surface finish.

Cast iron grades we supply

EN GJL grades [200](#) | [250](#) | [300](#) | [350](#)

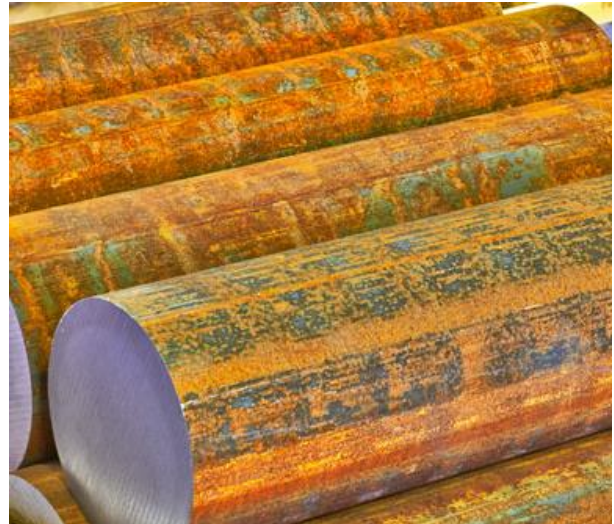
EN GJS grades [400-15](#) | [500-7](#) | [600-3](#)

Form of Supply

West Yorkshire Steel supply EN GJL 350 cast iron grade as round and flat bar. We can supply full bars or can offer cut pieces sawn to your required sizes.

Applications

EN GJL 350 is suited for applications where the cast iron requires excellent wearing characteristics and when components require a combination of strength and wear resistance superior to those of other softer cast iron grades. Typical applications include bearings, cams, bushes, pistons, gears and dies.



Contact our experienced sales team who will assist you with your enquiry.

- Diameter
- Flat

Typical Analysis

Carbon	2.90-3.65%	Silicon	2.10-2.90%
Manganese	0.60-0.80%	Sulphur	0.10% max
Phosphorous	0.30% max	Iron	balance

Typical Properties

**Typical Tensile
(subject to section)**
N/mm²
225-315

**Typical Hardness
(subject to section)**
HB
235-300

Mechanical properties shown are typical and may vary subject to the size and section of this cast iron grade.

Certification

Cast Iron Grade EN GJL 350 is available with a certificate of conformity, please request when placing any orders.

Quality Assured Supply

EN1561 EN GJL 350 cast iron is supplied in accordance with our ISO 9001:2015 registration.