



420-12 Spheroidal Graphite Iron

Available in flats and rounds.

420-12 S G Iron suppliers, delivered to the whole of the UK.

West Yorkshire Steel are suppliers of continuously cast bar, available in diameters and a limited range of flat sections. Sometimes referenced as a ductile iron BS2789 Grade 420-12 is a spheroidal graphite iron that possesses strength, impact and ductile properties of a different type to that of grey cast iron specifications, though with similar machining characteristics.

Related Specifications

BS EN 1563 EN16482 EN GJS 400-15 60-40-10 65-45-12 FGS420-12 SF400 SFP400 DIN 1693 ISO 185 250

Other cast iron grades we supply

EN GJL grades [200](#) | [250](#) | [300](#) | [350](#)

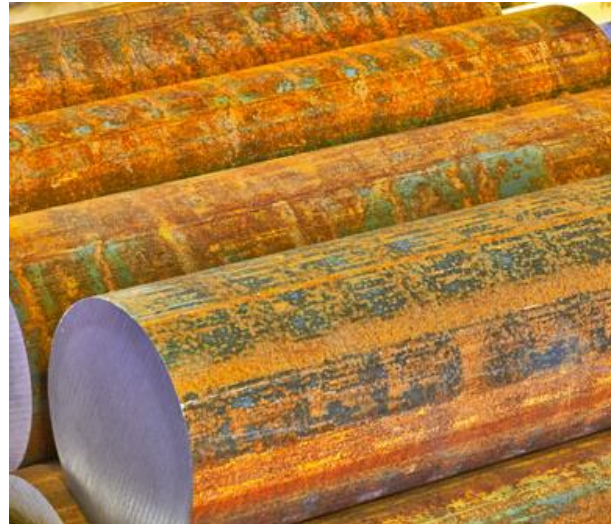
EN GJS grades [400-15](#) | [500-7](#) | [600-3](#)

Form of Supply

Supplied as round bar and a limited size range in flat bar. BS2789 Grade 420-12 diameters and flats are available in 3 metre bar lengths and can be sawn to cut lengths to your requirements.

Applications

BS2789 Grade 420-12 SG iron is suitable for applications where the electrical conductivity, optimal impact, fatigue and magnetic permeability features of a spheroidal graphite iron (SG iron) is required. Typical applications include dies, pistons, valves and moulds.



Contact our experienced sales team who will assist you with your enquiry.

- Diameter
- Flat

Typical Analysis

Carbon	3.40-3.85%	Silicon	2.30-3.10%
Manganese	0.10-0.30%	Sulphur	0.02% max
Phosphorous	0.10% max	Magnesium	0.07% max
Iron	balance		

Typical Properties

Typical Tensile Strength N/mm ²	Typical Elongation %	Typical Hardness HB
420	12	120-180

Mechanical properties shown are typical and may vary subject to the size and section of this grade.

Certification

420-12 SG iron is available with a certificate of conformity, please request when placing any orders.

Quality Assured Supply

420-12 SG iron is supplied in accordance with our ISO 9001:2015 registration.



West Yorkshire Steel Ltd
Sandbeck Industrial Estate,
Wetherby, Leeds,
LS22 7DN UK

Call: 01937 584440
Fax: 01937 580128
Email: sales@westyorkssteel.com



QUOTE ME



Information provided on our datasheets has been drawn from various recognised sources, including British, European and International Standards, recognised industry references (printed & online) and manufacturers' data. No guarantee is given that the information is from the latest issue of those sources or about the accuracy of those sources. Material supplied by the Company may vary significantly from this data but will conform to all relevant and applicable standards. Any of the products detailed may be used for a large range of purposes and as WYS has no control over their use; WYS specifically excludes all conditions or warranties expressed or implied by statute or otherwise as to dimensions, properties and/or fitness for any particular purpose, whether expressed or implied. © West Yorkshire Steel Ltd. All Rights Reserved.