

## BS1452 220 Cast Iron

Available in flats and rounds.

**BS1452 Grade 220 Cast Iron suppliers, delivering to the whole of the UK.**

Cast iron specification BS1452 Grade 220 is available as continuous cast grey iron bar in rounds and flats. This cast iron grade can be machined to achieve a good polished surface finish and is suitable for copper or chromium plating. A continuous cast iron bar, it has a fine grain structure combined with the fine graphite flake size and dense homogeneous structure.

### Cast iron grades we supply

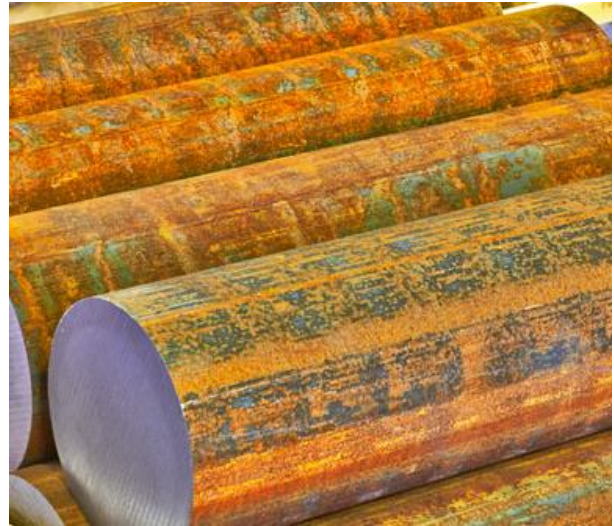
[200](#) | [220](#) | [250](#) | [260](#) | [300](#) | [350](#)  
[400-15](#) | [420-12](#) | [500-7](#) | [600-3](#) | [700-2](#)

### Form of Supply

West Yorkshire Steel supply Grade 220 cast iron as round and flat bar. We can supply full bars or can offer cut pieces sawn to your required sizes.

### Applications

BS1452 Grade 220 is used for many applications requiring good wearing characteristics and when components require reasonable cast iron strength and wear resistance. This grade is popular in the glass and plastics industries for applications including moulds, dies, cams, bushes, bearings and gears.



Contact our experienced sales team who will assist you with your enquiry.

- Diameter
- Flat

### Typical Analysis

Carbon	2.95-3.65%	Silicon	1.80-2.90%
Manganese	0.40-0.70%	Sulphur	0.10% max
Phosphorous	0.30% max	Iron	balance

### Typical Properties

**Typical Tensile  
(subject to section)**  
**N/mm<sup>2</sup>**  
125-185

**Typical Hardness  
(subject to section)**  
**HB**  
120-220

Mechanical properties shown are typical and may vary subject to the size and section of this cast iron grade.

### Certification

Cast Iron Grade BS1452 220 is available with a certificate of conformity, please request when placing any orders.

### Quality Assured Supply

BS1452 Grade 220 cast iron is supplied in accordance with our ISO 9001:2015 registration.