



BS1452 Grade 300 Cast Iron

Available in flats and rounds.

BS1452 Grade 300 Cast Iron suppliers, delivering to the whole of the UK.

A continuous cast bar and supplied in rounds and flats. Grade 300 offers excellent wear resistance and is a heat treatable cast iron grade. It is readily machineable in its supply condition giving an excellent machined finish.

Cast iron grades we supply

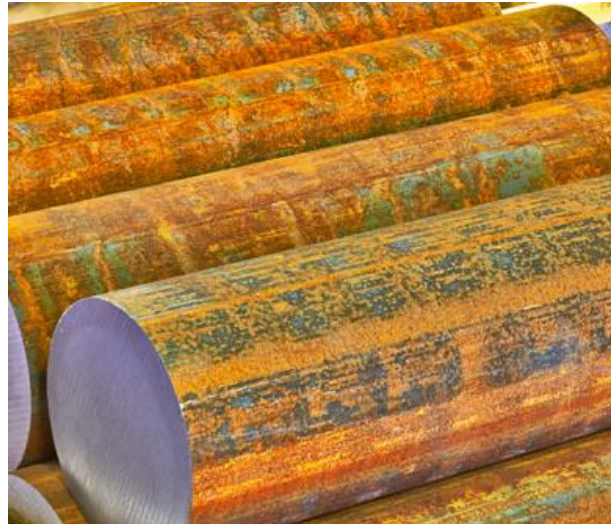
[200](#) | [220](#) | [250](#) | [260](#) | [300](#) | [350](#)
[400-15](#) | [420-12](#) | [500-7](#) | [600-3](#) | [700-2](#)

Form of Supply

West Yorkshire Steel supply Grade 300 as round and flat bar. We can supply full bars or cut blanks to your required sizes.

Applications

BS1452 Grade 300 is suitable for applications which require good wearing characteristics and when components require a combination of strength and wear resistance superior to those of other softer cast iron grades. Typical applications include, moulds, dies, bearings and gears.



Contact our experienced sales team who will assist you with your enquiry.

- Diameter
- Flat

Typical Analysis

Carbon	2.90-3.45%	Silicon	2.10-2.90%
Manganese	0.45-0.70%	Sulphur	0.10% max
Phosphorous	0.30% max	Iron	balance

Typical Properties

Typical Tensile
(subject to section)
N/mm²
185-220

Typical Hardness
(subject to section)
HB
190-260

Mechanical properties shown are typical and may vary subject to the size and section of this cast iron grade.

Certification

Cast Iron Grade BS1452 300 is available with a certificate of conformity, please request when placing any orders.

Quality Assured Supply

BS1452 Grade 300 cast iron is supplied in accordance with our ISO 9001:2015 registration.